

NEW PILOT 240W Module Road & Street Luminaires

5 years
Guarantee

CE

RoHS
Compliant ✓

LED technology
AIKO designer & manufacturer



LED by



AIKO



*image of 240W



Product guideline

Item Model: AK-R008/240

Project item

Description: LED STREET LIGHT

220-240VAC -200W -43200lm, PF>0.9

112pcs *Phelps 5050 5W

Driver Philips Xitanium 240W

Approved issue: 01 / 07 / 2021

xx= CCT value reference

Signature of Technical Manager

Issue	01-07-2021
Document n°	AK-R008
Vision n°	02.02
Item°	AK-R008/240



Electrical Specifications

Power	240W
Lumen	43200lm
Lumen on Per Watt	180lm/W
LED Chip and Driver Brand	Philips LED and Philips Driver
LED Chip Lifetime	Ts=85°C +100.000 hrs L70
LED Driver Lifetime	Ip67 Driver Tc<72°C +62.000hrs
Input Voltage	220-240V AC, 50/60HZ
Output parameters of LED driver	DC42V, constant current 5.18A
Power Factor (at Full Load)	>0.95
SPD	10KV
Total Harmonic Distortion	<%10
Operating Temperature Range	-30 ~ 60°C
Electrical Class	Class 1



Optical Specifications

Lumen	43200lm
Lumen on Per Watt	180lm/W
Lens	PC, 80°x160°, type III
Diffuser	/
Transmittance	98%
Suitable Road Class (ME1 to ME6)	ME3/ME4/ME5/ME6
Color Rendering Index (CRI)	>85
Color Standard(3-5 Mac Adam Steps)	Ts=85°C + 100.000hrs L70
Color Temperatures	4000K



Mechanical Specifications

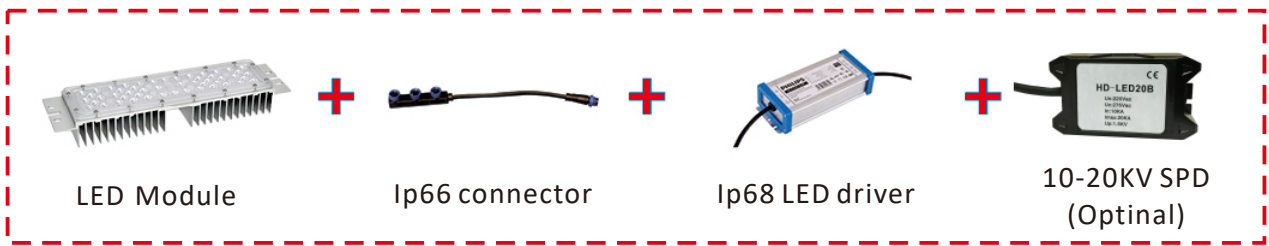
Housing	Aluminum
IP Protection	Ip66
IK Protection	Ik09 Body
Screws Material	Stainless Steel
Weight (kg)	14kg
RAL Code	RAL7021
Dimensions (mm)	990*370*140mm
Console Connection Side Entry	60mm
Console Connection Post Top	60mm
Consoled Angle	0° -5° -10° -15°
Recommended Installation Heights (m)	8-12m



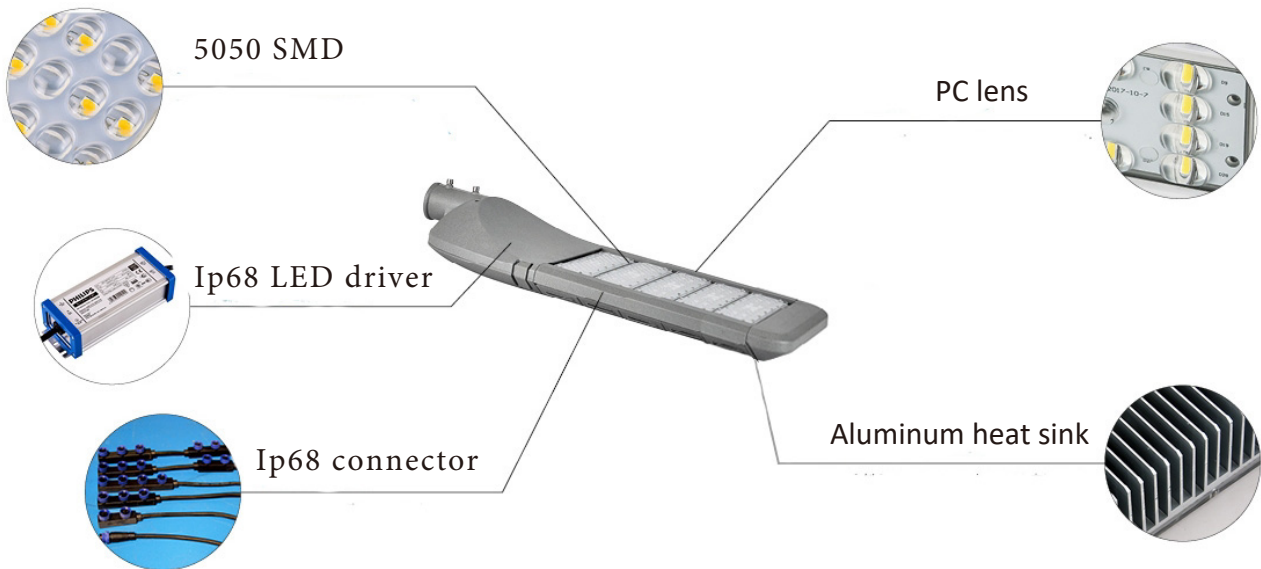
*** Very important notice:** PILOT series LED street light adopts Ip68 waterproof connectors for each single module for convenient maintenance in the future.
When lighting on 240W driver, remove any module would cause damage to the rest modules.

Certifications and Reports	60598-2-3, Lm79, Lm80, Tm21, Ip66, IK08-09, CE
Warranty	5 years

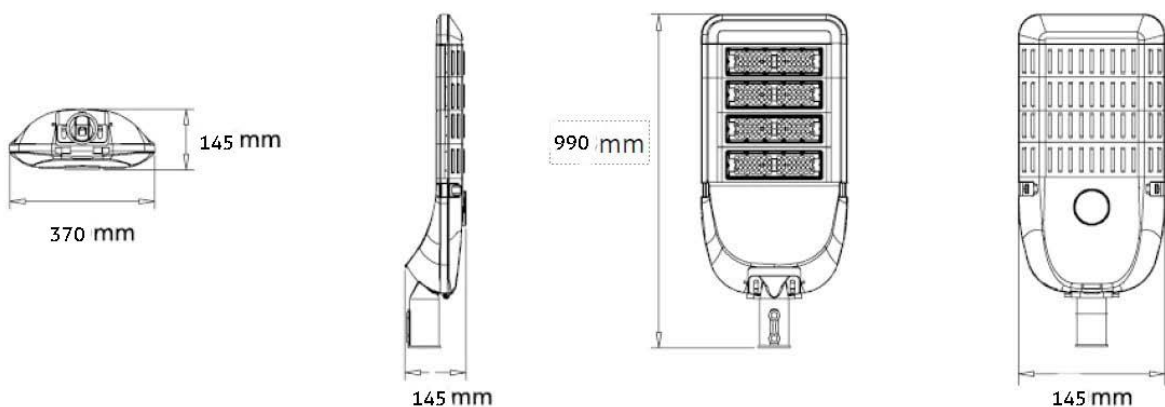
PRODUCT FEATURES



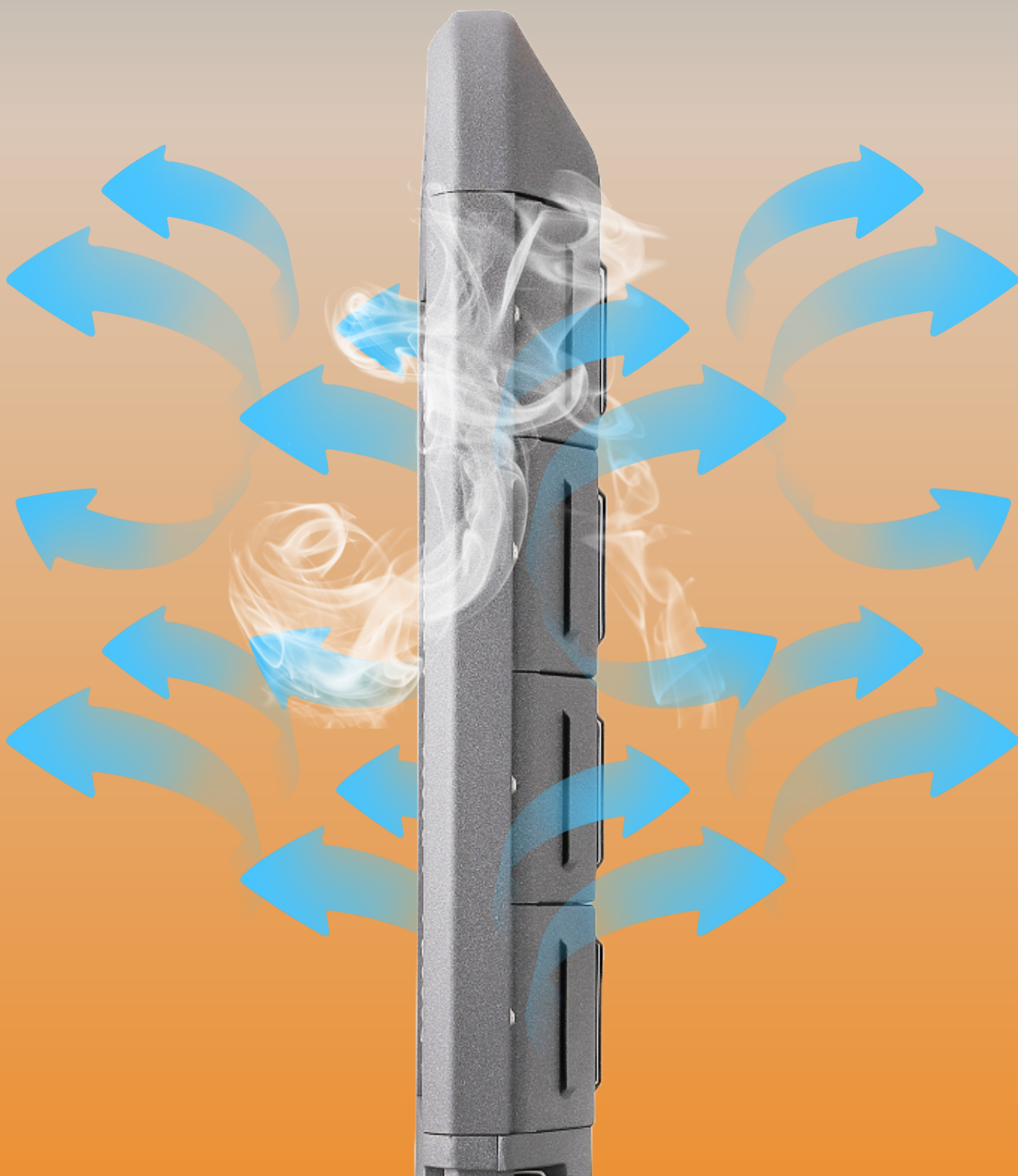
PRODUCT INTRODUCTION



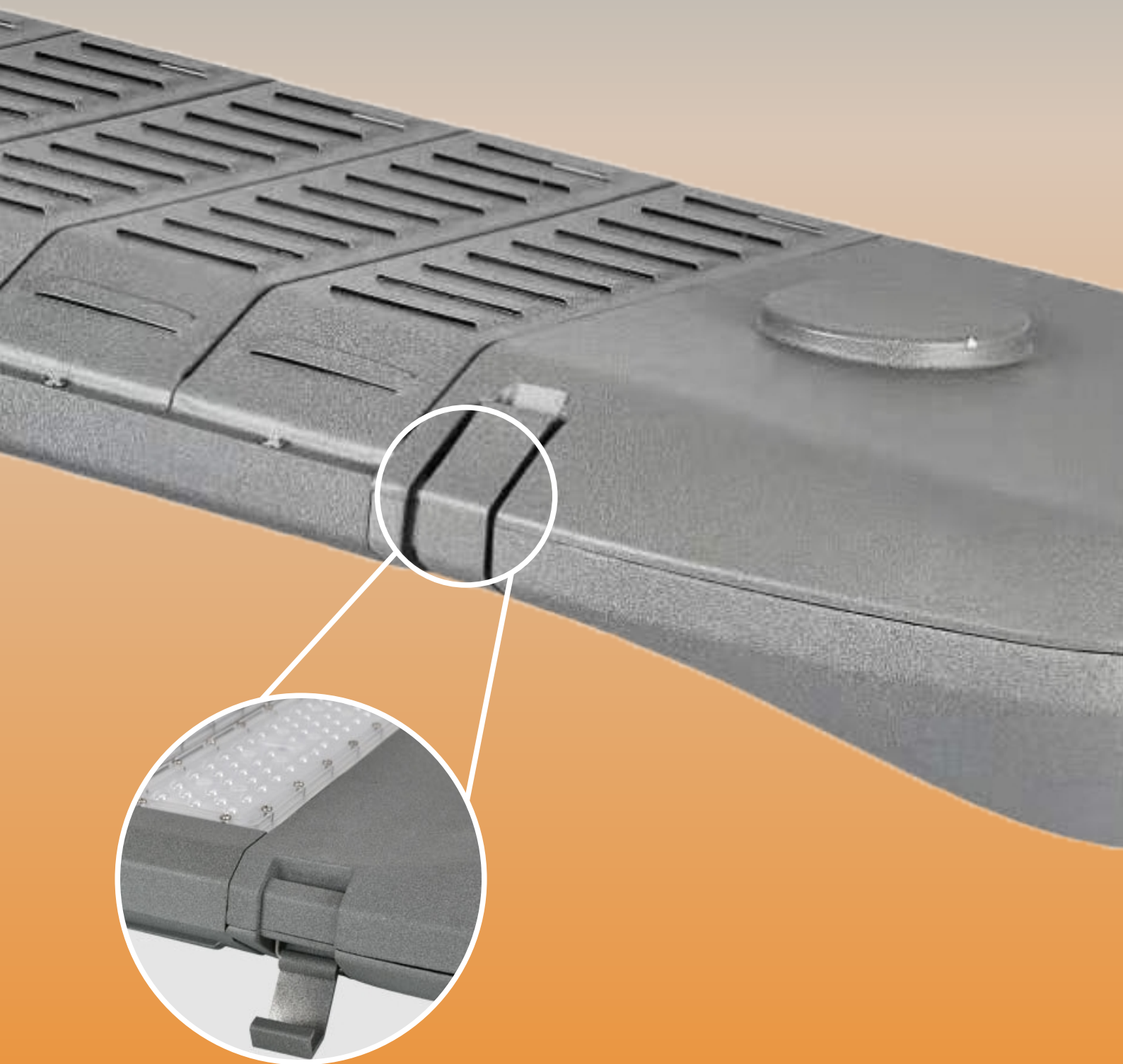
PRODUCT DIAGRAM



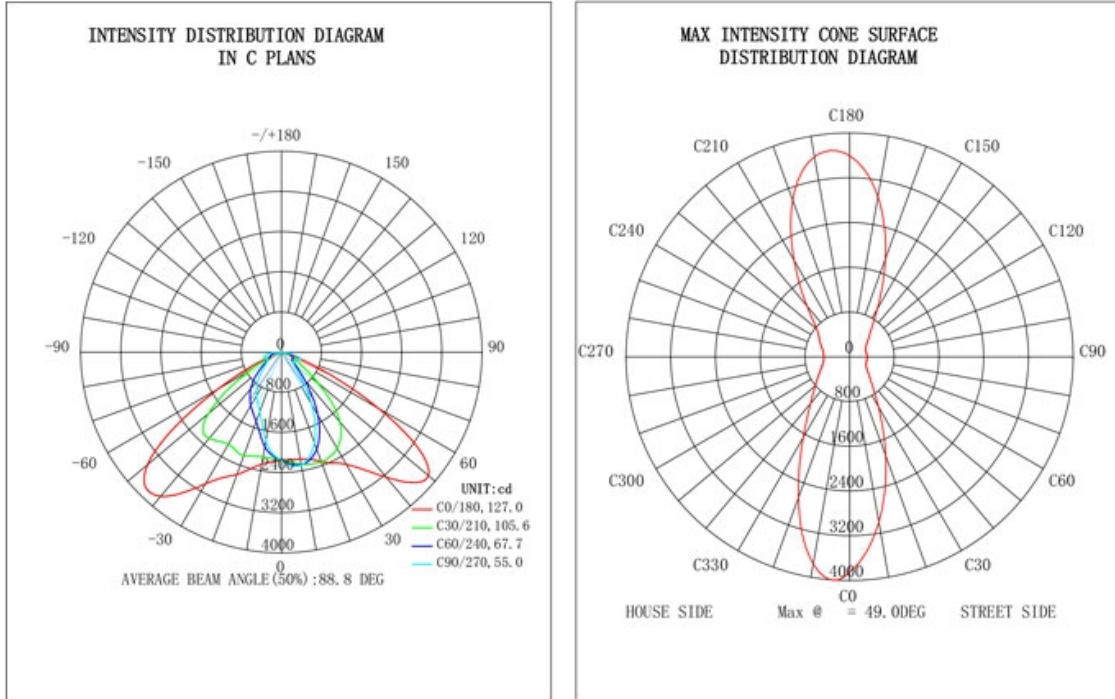
Heat sink, strong and heavy aluminum



Tool-free open and maintenance



INTENSITY DISTRIBUTION



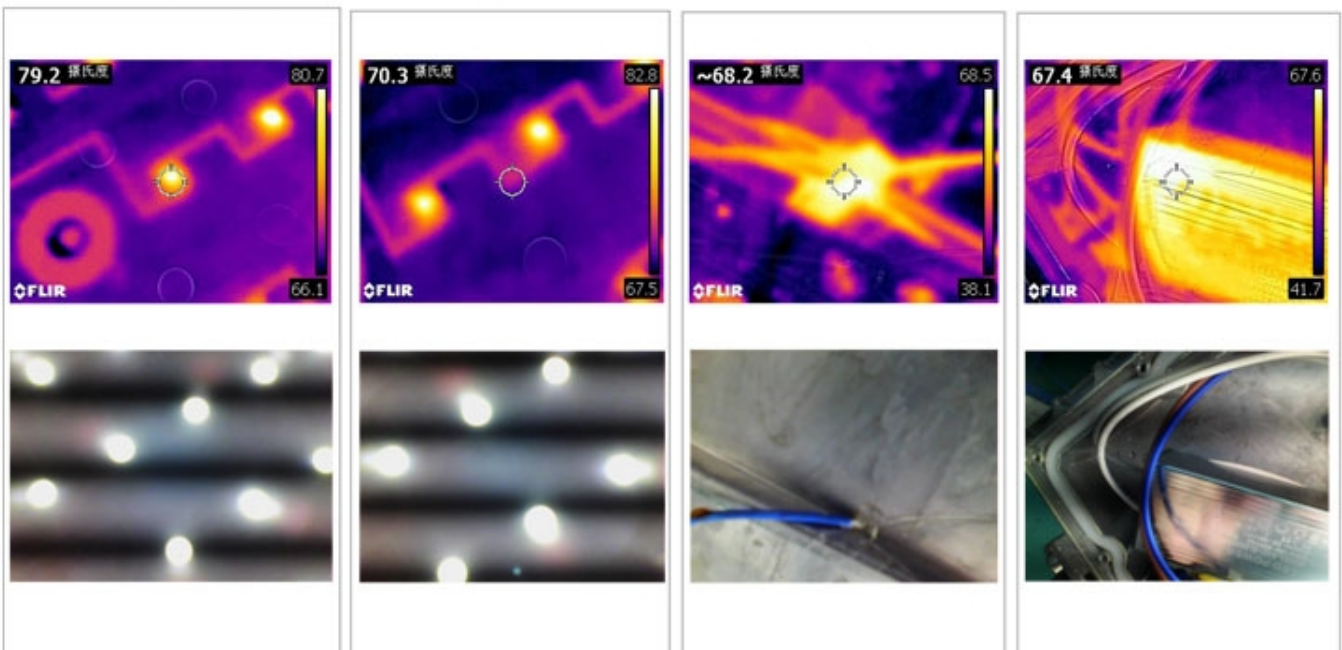
IMAGERY OF THERMAL

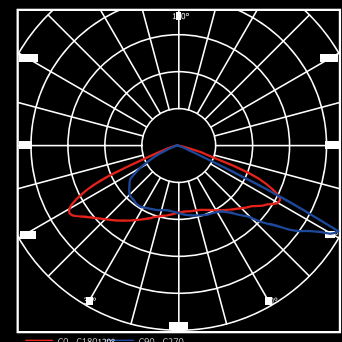
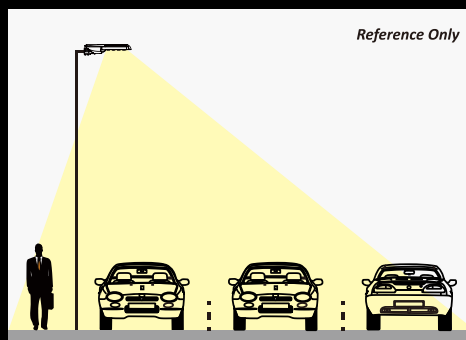
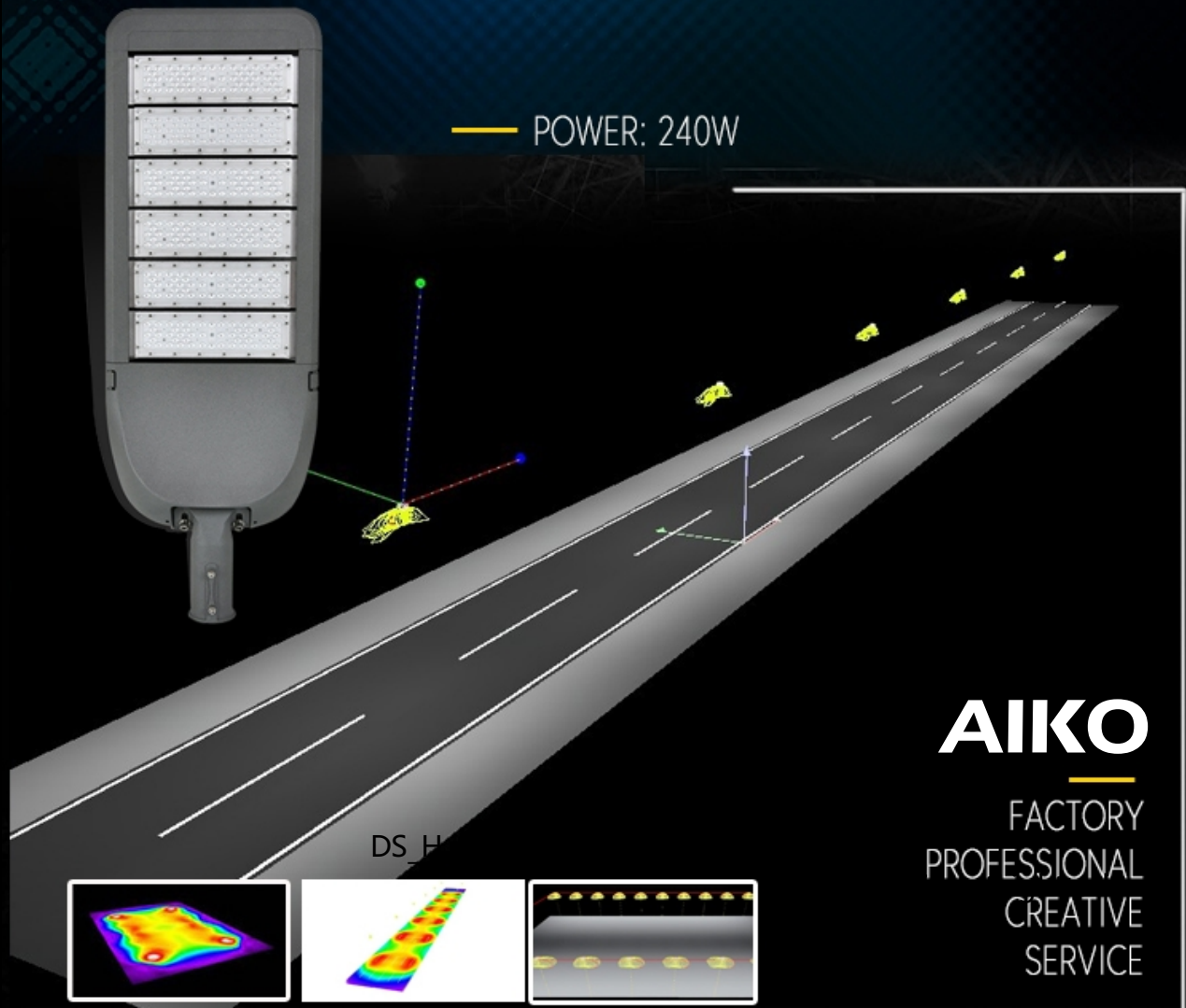
LED junction

PCB

Housing

Driver





TYPE III

The Type III lens has beam angle of 80*160 degrees. In the IESNA Standard, the Type III distribution is meant for roadway lighting, general parking areas and other areas where a larger area of lighting is required. This distribution is intended for luminaires mounted at or near the side of medium width roadways or areas, where the width of the roadway or area does not exceed 2.75 times the mounting height.

Issue	01-07-2021
Document n°	AK-R008
Vision n°	02.02
Item°	AK-R008/240



Option
Project



LED by





Excellent
Quality



PILOT series
AK-RO08

AIKO

LED STREET LIGHT
5 YEARS GUARANTEE
240W 220-240V SPD10KV
DESIGNED & MADE IN AIKO
<http://www.aikolight.co>

